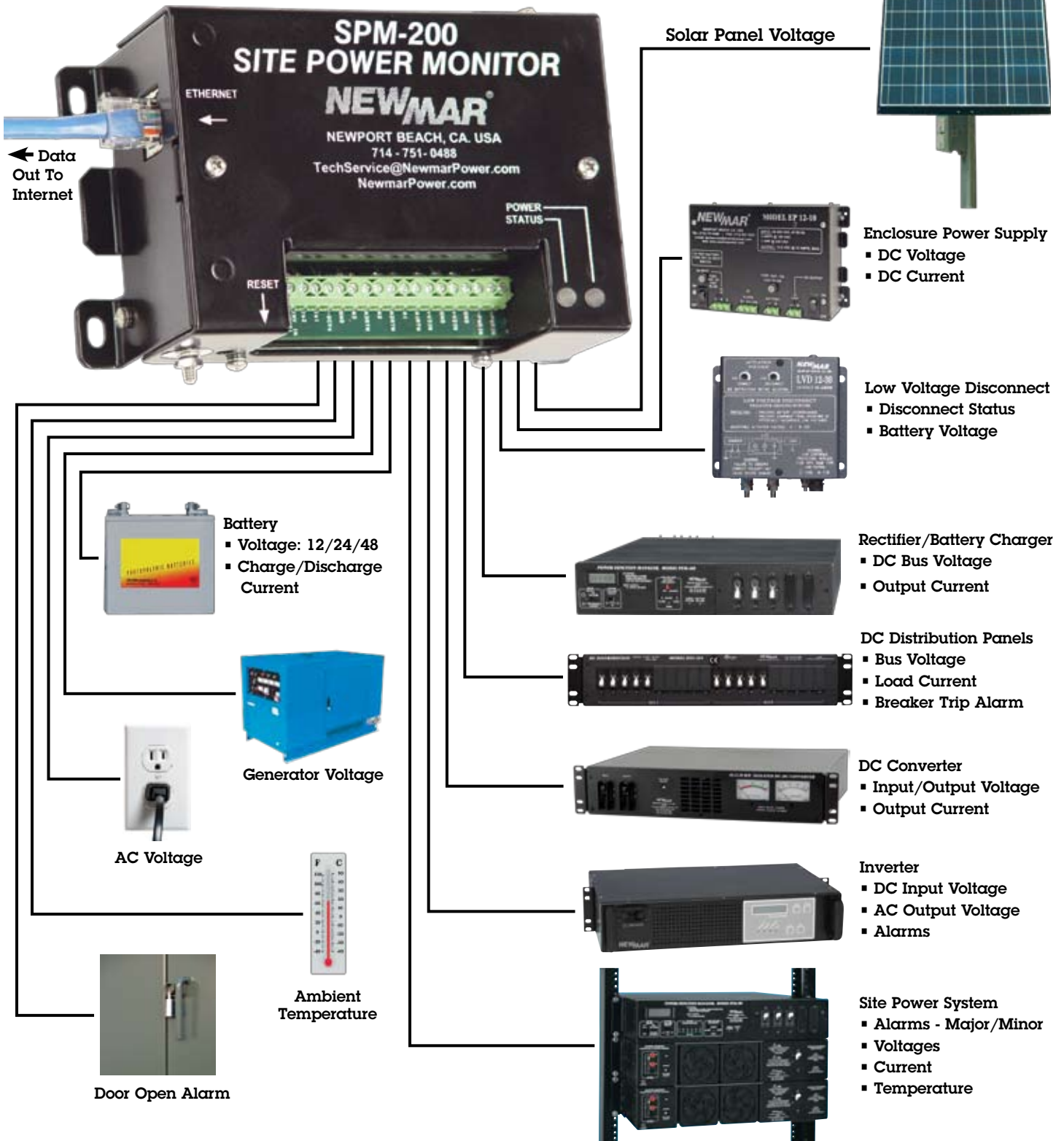


Site Power Monitor

Remote Monitoring of Critical Site Conditions Sensor Input Examples



Site Power Monitor

Remote Monitoring of Critical Site Conditions:

Sensor Data

- DC Bus/Battery Voltage
- DC System Amperage/Battery Charge-Discharge Current
- AC Voltage
- Ambient Temperature
- Dry Contacts/Alarms

Firmware

- Programmable Alarms
- Data Logging
- Ethernet Camera

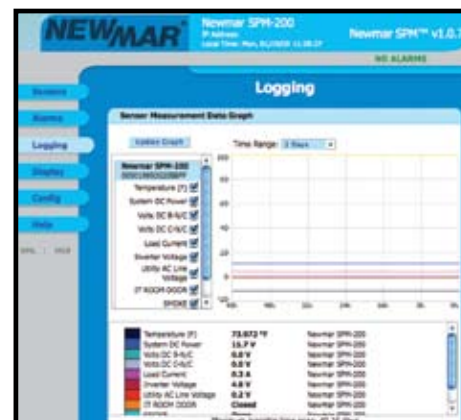
Reporting Via:

- Internet – Software Included
- E-Mail
- Cell Phone

Web-enable and integrate intelligence to any site's AC and DC power and sensor system for 24/7 monitoring, alarm condition notification, and data logging of vital functions. All programmable, accessible, and managed via the Internet: TCIP or SNMP. View current conditions and log 30 day history of DC and AC power status and other conditions at remote sites before dispatching personnel.

The Site Power Monitor is designed specifically for monitoring power supplies, rectifiers, batteries, converters, inverters, UPS, distribution panels, and AC power at communication sites, base stations, outdoor enclosure via Ethernet or Wireless connection. The palm sized unit can be rack, DIN-rail, or wall mounted and is easily adapted to virtually any make of power system via nine sensor input ports which capture and stream critical data via the internet for analysis and logging of site history. Web page based programs are easily user configured for site parameters with up to 50 desired alarm conditions settings and multiple automatic notification options by e-mail, PDA, and mobile phone.

Sites without internet access can use the monitor solely as a data logger that captures and retains 30 days' data, ready for download to lap top for site history file and analysis of component performance and failure conditions.



User friendly data screens

Specifications

Power Source Voltage

9-60 negative/positive ground, 250 mA max.

Monitor Inputs: 9 Total

Voltage

DC: 3 Ports:

- 2 each: 0-40 VDC
- 1 each: 36-60 VDC
- Accuracy: +/- 5%

AC: 2 Ports:

- 120/240 (90-264) utility power (L-N or L-L)
- 120/240 inverter output (floating)
- Accuracy: +/-5%

DC Current: 1 Port

- +/- 100mv, 100 amp differential shunt voltage
- Read battery charge/discharge, or load current
- Accuracy: +/-5%

Dry Contact Switch Sensors: 3 Ports

- Possible uses: door open, water leak detection, smoke alarm, component fail, breaker trip, high temperature

Ambient Temperature Sensor

- Located outside case of unit
- Range: -40 to +60° C, -40° to +140° F
- Accuracy: +/-0.5° C

Mechanical

Case: Aluminum, powder coat

Size/Weight: 2.18" x 3.27" x 4.66", 1 lb

Mounting options

- Wall mount
- DIN-rail
- 19 or 23 inch rack mount (via optional bracket) model RM- SPM

Environmental

Operating Temperature range -20° C to 60° C

Data Screens

- Sensors
- Alarm settings (customized web page)
- Data logging
- Camera feeds (4 max.)

Alarms

- 50 user configurable all with separate high/low trip settings
- Notification by Via Internet, e-mail or mobile phone
- User-programmable notification to 5 different e-mails addresses

Optional Accessories

Sensors

- Water
- Door/window open alarm
- Fire/smoke detector

Software

- Multi site monitor software – Model: 100 Site Software- SPM

Isolated DC Converter

- For powering **AND** monitoring a -48 VDC source. Model: 48-12-1i

Rack Mount Panel (pictured below)

- For 19/23" racks model: RM-SPM



Powering the Network